

# Newsletter

May 2021

University of Glasgow | Issue No.34

## Headlines in brief

- Welcome
- Site progress
- Working Hours
- Look ahead
- Who to contact



*The Western Campus with Advanced Research Centre (left) and Clarice Pears Building (right)*

## Welcome to our May update

### Site Progress

- The Clarice Pears Institute of Health & Wellbeing steel frame has completed, with secondary steel and envelope works ongoing.
- The Adam Smith Business School and Postgraduate Teaching Hub project will commence this summer (more details overleaf)
- Foundation and groundworks are underway at a new HV switchroom, located at the rear of the Graham Kerr Building next to the Multiplex site offices.
- Landscaping works outside the Clarice Pears Building are ongoing at Byres Place and University Place including new paving and tree pits.

Built for **positive impact**

---

## Adam Smith Business School & Postgraduate Teaching Hub

The Adam Smith Business School & Postgraduate Teaching (ASBS & PGT) Hub will be a unique, multi-disciplinary a home for students of postgraduate master's degrees and provide world-leading facilities for the Adam Smith Business School.

It will provide an excellent setting to support collaborative research, connections with practice, and a wide range of approaches to learning and teaching, delivering world-class student and learning experience. It will place business skills and engagement at the heart of the postgraduate experience.

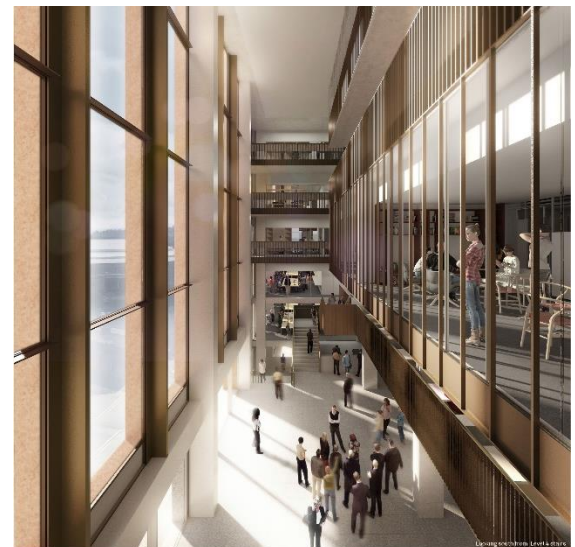
Located adjacent to the International College and set back from Dumbarton Road, construction will commence late June and will complete in summer 2023.



*View from Dumbarton Road*



*View from University Square*



*Main Atrium*

Built for **positive impact**

---

## Project Images



*The Alexander Memorial Chapel now visible from Church Street*



*Structural demolition of the Pontecorvo Building*

---

## Project Look Ahead

- We will be reinstating vehicular access/ egress to site via Church Street in May. This gate will be manned and a road brush will be in operation.
- Soft strip and surveys will be taking place in the Robertson Building next month ahead of demolition (adjacent to the International College).
- Demolition of the Gardiner Institute and basement infill is now complete ahead of drainage installation and Pontecorvo demolition is ongoing.
- Pedestrian access through University Place East to University Avenue remains closed with a diversion through in operation through the Biomedical Building footpath.
- Internal works to the Advanced Research Centre will continue with mechanical & electrical works, partitions, glazed screens and floor installation ongoing.

## Contacts

**community@multiplex.global**



**Kieran Ronnie**  
Social Value &  
Community Manager  
[Kieran.Ronnie@multiplex.global](mailto:Kieran.Ronnie@multiplex.global)



**Fergus Shaw**  
Construction Director  
[Fergus.Shaw@multiplex.global](mailto:Fergus.Shaw@multiplex.global)

## Site Working Hours

Monday to Friday: 7:30am – 9pm

Saturday: 7:30am – 5pm



**Registered site**  
[www.ccscheme.org.uk](http://www.ccscheme.org.uk)

Built for **positive impact**